

INFORMATION NOTE

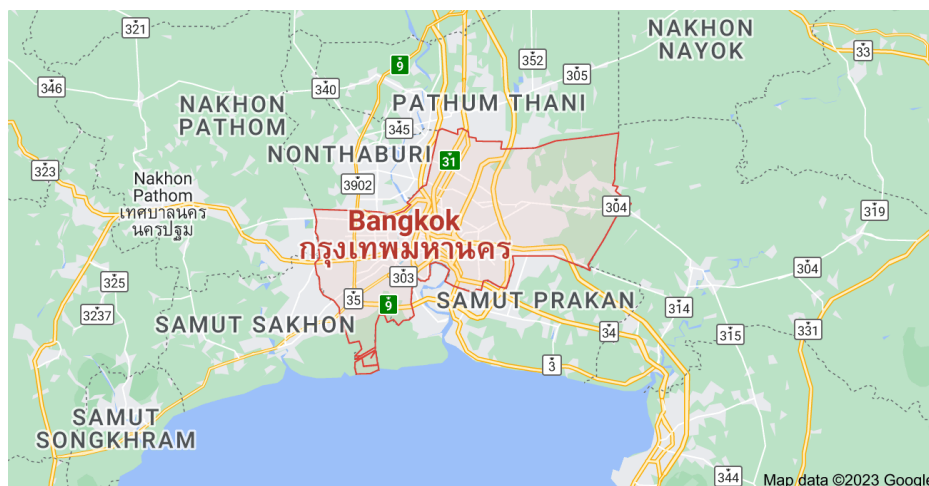


“FAO Regional workshop on understanding fisheries support measures in the Asian context”

Bangkok, Thailand
17 to 19 October 2023

Meeting venue: Bangkok, Thailand

Bangkok, Krung Thep, capital, and chief port of Thailand, is located on the delta of the Chao Phraya River, about 25 miles (40 km) from the Gulf of Thailand.



For major tourist attractions in Bangkok, most of them are historical sites or religious sites such as temples in Bangkok. There is beautiful architecture, wall painting and also important in history, such as Wat Phra Sri Rattana Satsadaram (Temple of the Emerald Buddha), Wat Phra Chetuphon Wimon Mangalaram (Temple of the Reclining Buddha), Wat Arun Ratchawararam (Temple of Dawn), Wat Sra Ket, and Phu Khao Thong (Golden mountain), and also



There are also other interesting places palaces, museums, parks, various shopping centres in Bangkok. There are both chilling places like Chatuchak Weekend Market, Sampeng Market, Yaowarat and Phahurat night market or luxury level such as many leading department stores in all areas of Bangkok as well.



Bangkok weather in October (17 - 19 October 2023)

The daily average temperature for Bangkok is normally around 29°C, with highs of 32°C and lows of 25°C.

Around 190mm of rain falls throughout October. The average humidity for the Bangkok is around 76%, though considering the high temperatures at this time of year, caution is advised as heat stroke and fatigue can occur.

Entitlements

Participants will be provided with Daily Subsistence Allowance (DSA), Transport Allowance (airport transfer fees) and other miscellaneous expenses. The DSA will cover the duration from 16th October 2023 to 20th October 2023.

Accommodation

Novotel Bangkok On Siam Square

392/44, Siam Square Soi 6, Rama I Road, Pathumwan, Bangkok 10330 Thailand

PHONE: +66 2 209 8888

FAX: +66 (0) 2 2551824

LATITUDE: 13.744872

LONGITUDE: 100.534873

******Kindly be advised that as per the hotel's check in policy, the Hotel will require from each participant an incidental deposit as guarantee to cover for any personal expenses during your stay.

The amount is **THB 1,000** net per room per night. You may pay by cash/credit card, which the total amount or balance is reimbursed upon check-out.



Airport Transfer

There will be no airport transfer arrangement as transport allowance is provided. You may kindly use the public transports; GRAB, taxi or train to commute to and from the airport.

Please find below some options of local travel at the Don Mueang Airport and Suvarnabhumi Airport:

(1) Airport Taxi

- DON MUEANG AIRPORT
 - Taxi ranks are available outside both Terminal 1 and Terminal 2 Arrivals Hall.
- BANGKOK SUVARNABHUMI AIRPORT
 - Taxis are located outside the first floor (Ground level), close to entrances 3, 4, 7 and 8.
 - There are two kinds of taxis at BKK Airport:
 - Ordinary taxi: for 2-3 people with short baggage.
 - Maxi taxis: For 3-4 people carrying large baggage.

(2) Airport Transfer (AOT Limousine)

- DON MUEANG AIRPORT
 - AOT Information Counter
Website: <https://www.airportthai.co.th/en/>
Service: AOT Information Counter
Location: 1, Terminal 1, Terminal 2
- BANGKOK SUVARNABHUMI AIRPORT
 - AOT LIMOUSINE CALL CENTER
TEL: +(66) 2-134-2323-4, +(66) 2-134-2773
MOBLIE: +(66) 86342-1445-8
FAX: +(66) 2-134-2328, +(66) 2-134-2216
E-MAIL: callcenter@aot-limousine.com, cr@aot-limousine.com

Visa

Participants are responsible for arranging their visas. Kindly ensure that this is done well in advance on the travel dates. Should an official letter of invitation be required, kindly contact the Secretariat soonest possible.

Currency

Local currency: Thai Baht (THB)

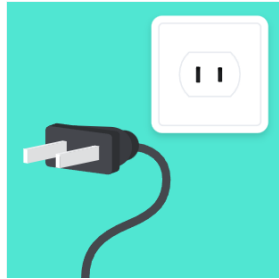
Exchange rate:

1 THB = 0.028USD (as of 15 September 2023)

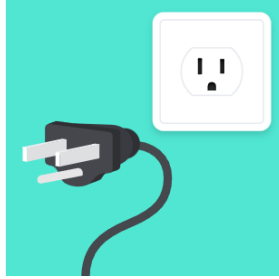
1 USD = 35.79 (as of 15 September 2023)

Plug type in the Thailand

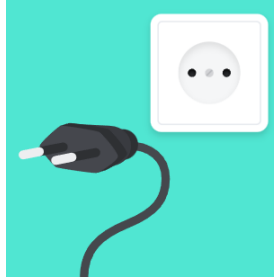
For Thailand, there are four associated plug types, A, B, C and O (see figure below). Plug type A is the plug which has two flat parallel pins, plug type B has two flat parallel pins and a grounding pin and plug type C has two round pins. Thailand operates on a 230V supply voltage and 50Hz.



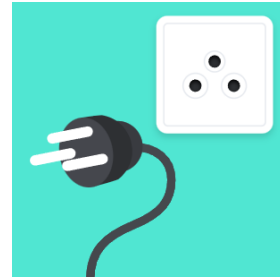
Type A



Type B



Type C



Type D

Medical Assistance

Please contact the Secretariat if medical assistance is required.

Details of nearby hospitals are as follows:

Police General Hospital

Rama 1 Road,
Pathumwan,
Bangkok
Tel +66 2 2076000

Bumrungrad International Hospital

33 Sukhumvit 3
Wattana
Bangkok
Tel +66 2 0668888

For further information please contact:

GEMMA Meermans Matainaho (INFOFISH)

Email: gemma@infofish.org
+6010 382 1610

NURSHAMIN Johari (INFOFISH)

Email: nurshamin@infofish.org
+6010 200 1154

CHANPHEN Bhawangkananth (FAO)

Email: chanphen.bhawangkananth@fao.org