
FAO Regional Workshop on **understanding fisheries support measures in the Asian context**

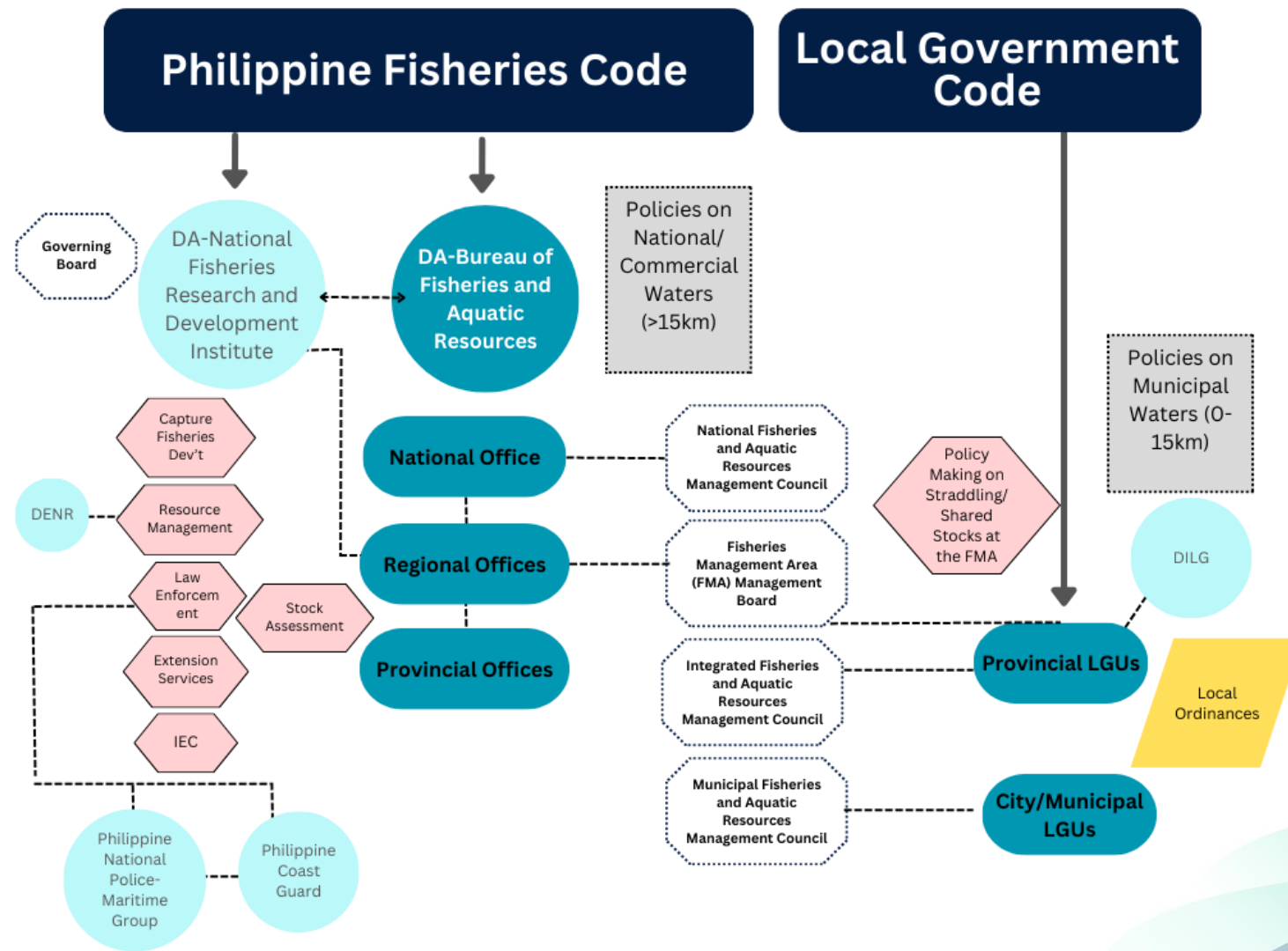
Venue : *Bangkok, Thailand*
Dates : *17 to 19 October, 2023*

Edward Yasay, Regional Director

*Kima Karla H. Cedo, Senior Aquaculturist/FMA Focal
Bureau of Fisheries and Aquatic Resources, Philippines*

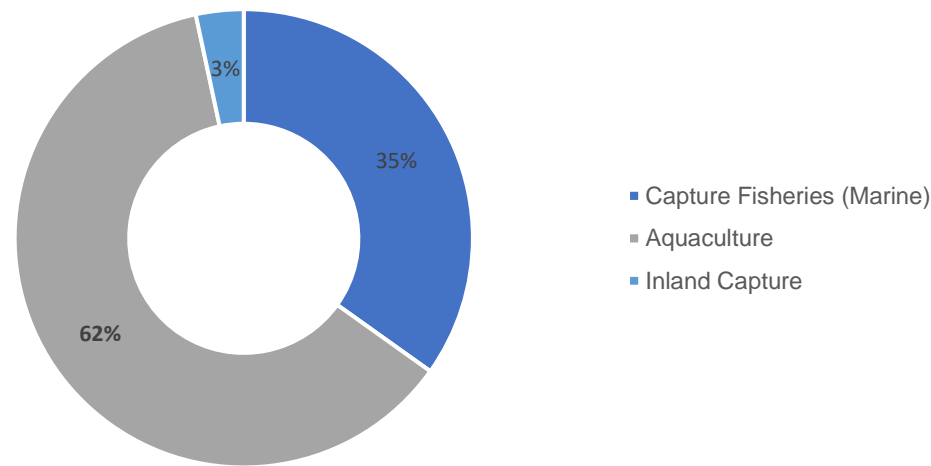
Organisers : *FAO, with the participation of the Organisation for Economic Co-operation and Development (OECD)
and technical support from INFOFISH*

Institutional Framework for Fisheries (with focus on capture)



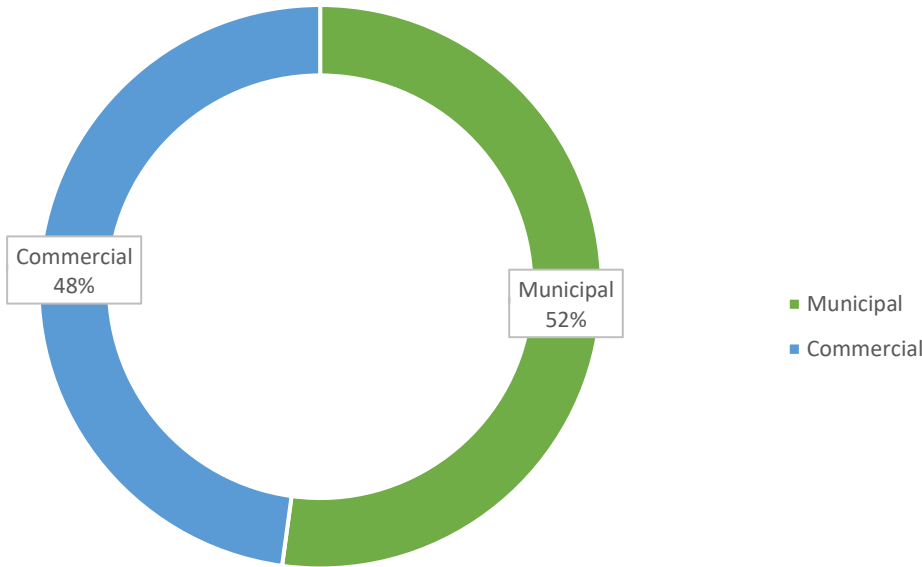
Economic relevance of the fisheries sector

Fisheries Production by Sector (2022)

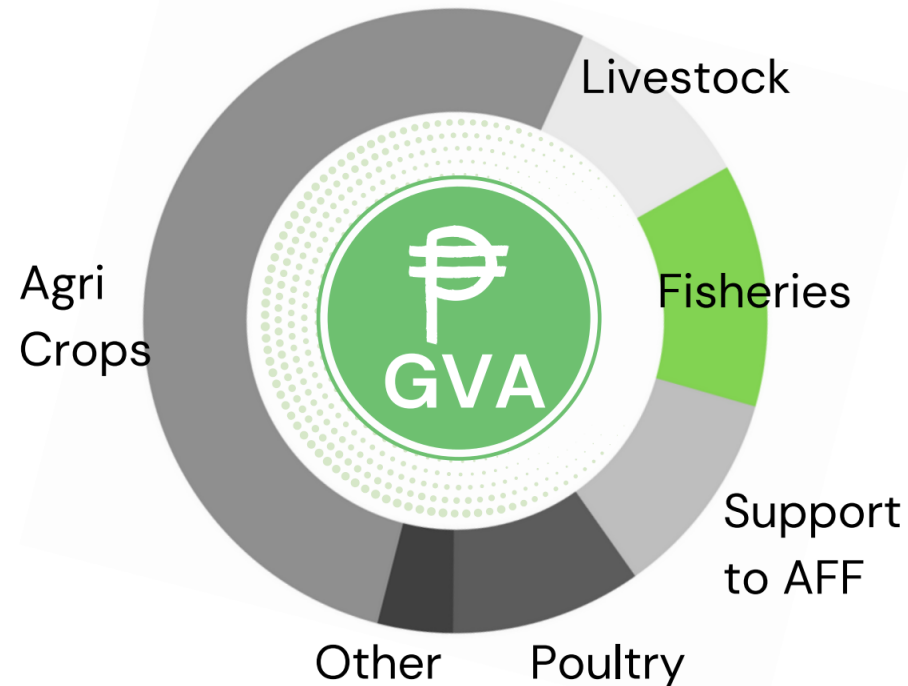
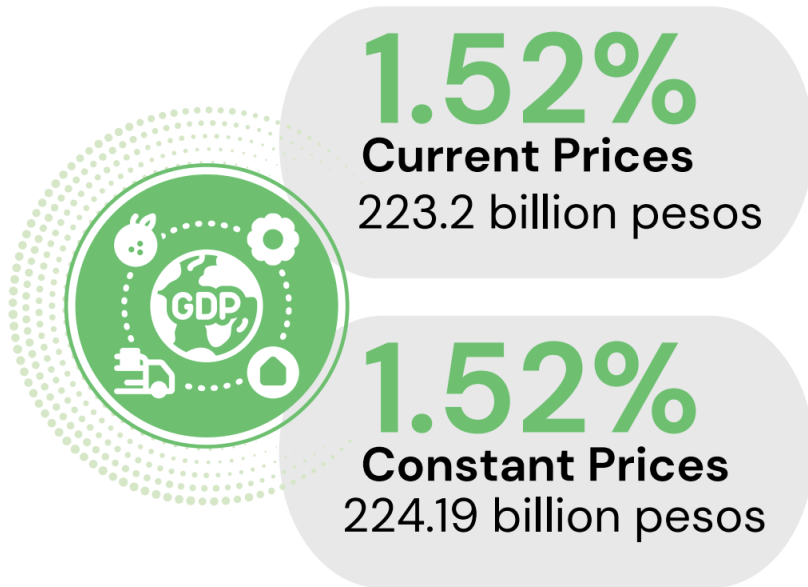


Capture Fisheries (Marine)	35%	1,815,285.37
Aquaculture	62%	3,217,661.51
Inland Capture	3%	175,351.65
TOTAL		5,208,298.53 MT

Capture Fisheries Production by Sub-sector



Economic relevance of the fisheries sector



12.7%
Current Prices

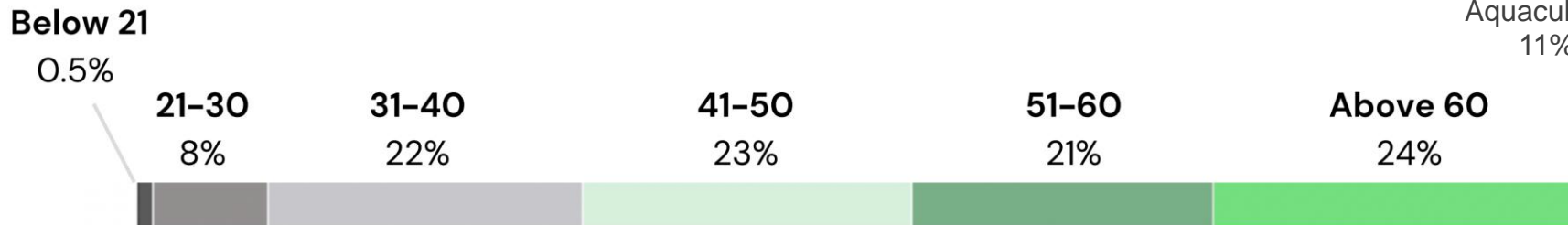
12.6%
Constant Prices

Economic relevance of the fisheries sector

Fisherfolk Demographics

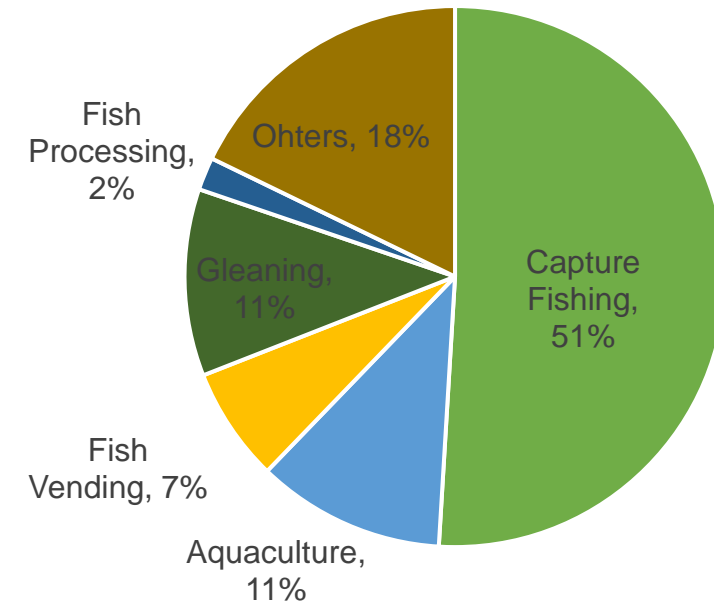


There is a total of 2.3 Million registered municipal fisherfolk (as of Dec 2022). **5** in every 10 are women



Distribution by Age Bracket

Fisheries Distribution by Sector



Capture Fisheries

Capture Fisheries Demographics



There is a total of **1.17 Million** registered municipal fisherfolk engaging in **Capture Fishing** (as of December 2022). **One** in every 10 is women.

Top Commodity Exports

Commodity	Volume (MT)	Value (in USD)
Tuna	106,923	403 M
Crab	9,156	91 M
Eel	22,352	53 M
Octopus	8,372	51 M
Grouper	20,572	37 M
Cuttlefish	4,729	19 M
Sardines	7,673	14 M



Types of support provided by government agencies to fisheries (capture)

- Government support through Department of Agriculture- Bureau of Fisheries and Aquatic Resources (DA-BFAR) is focused on municipal/small-scale fishers
 - Technical assistance on fishing gears/technology and construction
 - Livelihood programs (Replacement/provision of FBs (FB Pagbabago & Capacitating Municipal Fishers Program (FRP Bancas) and Gear Swapping)
 - Marketing and promotion of fisheries products
 - Price monitoring
 - Post harvest support facilities (CFLCs, fish stalls, fish boxes, etc)
 - IEC, Training, and capacity development
 - Policy formulation on capture fisheries and regulations
 - Monitoring, control, and surveillance

Types of support provided by government agencies to fisheries (capture)

- Philippine Fisheries Development Authority
 - Post-harvest infrastructure facilities and essential services
 - Operations of major fish ports in the country
- National Fisheries Research Development Institute
 - Research on technologies responsive to the needs of fisherfolk
 - Stock assessment
- Philippine Statistics Authority
 - Produce official statistics for capture fisheries

Types of support provided by government agencies to fisheries (capture)

- Philippine Coast Guard
 - Maritime law enforcement, including maritime safety
- Philippine National Police-Maritime Group
 - Environmental law enforcement
- Department of Labor and Employment
 - Occupational safety and health at sea
 - Cash for work program

Types of support provided by government agencies to fisheries (capture)

- Department of Social Welfare Development
 - Livelihood programs for disadvantaged sectors
- Department of Trade Industry
 - Price control
- Cooperative Development Authority
 - Development/strengthening of cooperatives

Types of support provided by government agencies to fisheries (capture)

- Department Environment and Natural Resources-Biodiversity Management Bureau
 - Establishment of National MPAs
 - Provision of biodiversity-friendly enterprises
 - IEC
- Maritime Industry Authority
 - Fishing vessel/boat admeasurement
- LGUs
 - Livelihood (PEASO)

Beneficiaries of the support provided to fisheries

Beneficiaries	Support Provided
Municipal/Small-scale fisheries	Livelihood provision (gear swap, fishing gears, boat replacement, mariculture, enterprises, other non-fishery livelihood provided by other agencies), capacity development, community fish landing centers
Commercial	Policy support, capacity development; fishing crew during closed fishing season
Distant-water fisheries	Policy support, capacity development
Processors	Capacity development, provision of equipment and facilities
Cooperatives	Capacity development, livelihood

Challenges delivering government support

- Frequent typhoons (and disasters) affecting government support
- Not enough social preparation from the local government
- Political interventions